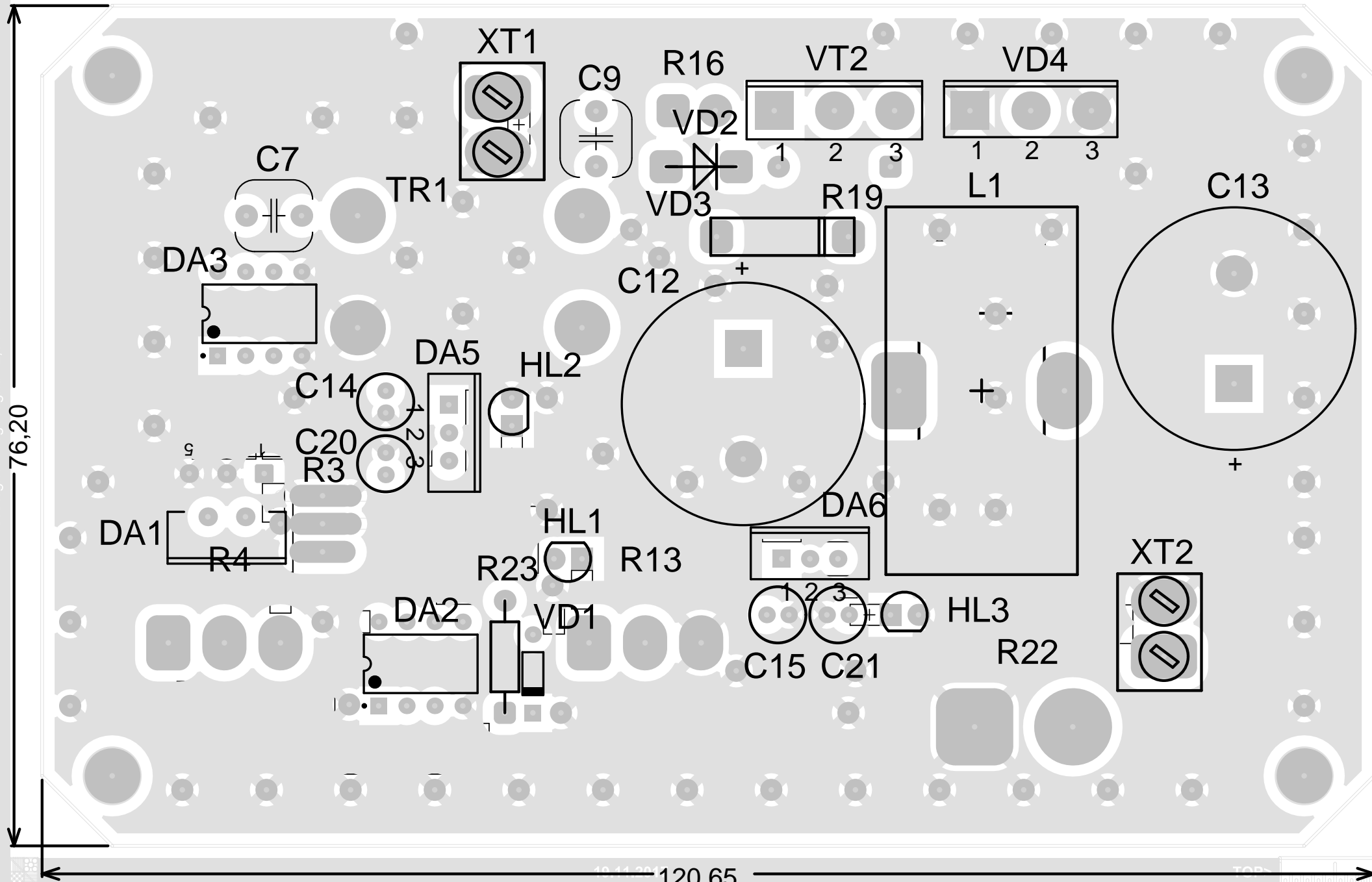


<http://www.microsmart.eu/index.php?topic=44.msg52546#msg52546>

Mod Coala	Nr. document	Semnat	Data
Elaborat.	Speian S.		
Controlat	Sestacov T.		
N.contr.	Capcanari I.		
Abrobat	Sestacov T.		

UTM 525.1 151 0238 E1			
Unitate de masurare a deformatiilor dinamice		Litera	Masa
		S	
Cchema electronica de structura		Coala	Coli
		1	1
UTM FIMET SCE-151M			

Designator	Comment	Quantity	Description	Footprint
C1	0,01u	1		CAPC2012(0805)N
C2	10uF 25V D	1		CAPC7343(2917)(D)
C3, C4, C6	0.1uF	3		CAPC2012(0805)N
C5	47n	1		CAPC2012(0805)N
C7, C9, C10	1u	3		CAPMF 7.3x6.5x10x5LS, CAPMF 7.3x6.5x10x5LS, CAPC2012(0805)N
C8, C11, C17, C18, C22, C23, C25, C26	0,1u	8		CAPC2012(0805)N
C12, C13, C20, C21	2200uF 100V	4	[NoValue], Aluminium Electrolytic Capacitors - Snap In 2200UF 100V, [NoValue], [NoValue]	CAPPRS10-22x45, CAPPRS10-22x45, CAP 5x11x2, CAP 5x11x2
C14, C15	100uF 100V	2		CAP 5x11x2
C16, C24	0.1u	2		CAPC2012(0805)N
C19, C27	0.01u	2		CAPC2012(0805)N
DA1	LM2576T-ADJ	1	Импульсные регуляторы напряжения 3A STEP-DOWN VLTG REG	TO-220-5
DA2	LM358-N	1	Low-Power,Dual-Operational Amplifiers	DIP-8
DA3	TC4420EPA	1	Драйвер MOSFET DRIVER 6A HS	DIP-8
DA4	ACS712	1	датчик тока	SO-8_N
DA5	L7815ABV	1	Linear Voltage Regulators 15V 1.0A Positive	TO-220AB
DA6	LM7805	1	Linear Voltage Regulators 15V 1.0A Positive	TO-220AB
HL1, HL2, HL3	LED	3		LED 5mm Red
L1	Inductor Iron	1	Magnetic-Core Inductor	TOR27,35x11,45x14,15
R1	4.7k 0,125W	1		RESC2012(0805)N
R2	47k	1		RESC2012(0805)N
R3, R8, R9, R10, R17	10k	5		3296W, RESC2012(0805)N, RESC2012(0805)N, RESC2012(0805)N, RESC2012(0805)N
R4, R13	50k	2		POT16K1-LIN
R5, R6	100	2		RESC2012(0805)N
R7, R14, R15, R18, R20, R21	1k	6		RESC2012(0805)N
R11	5k	1		RESC2012(0805)N
R12	520 0,125W	1		RESC2012(0805)N
R16	4.7	1		Res. Film Vert 2W
R19	10k Film 0,125W	1		Res. Film Horiz 0,125W
R22	1k 5W	1		Res. Film Vert 5W
R23	0 0,125W	1		Res. Film Horiz 0,125W
TR1	Trans Coupl	1	Coilcraft's CMT toroid style common mode chokes	Coilcraft-CMT1_3
VD1	Diode	1	Small Signal Diode	DO-35
VD2, VD3	1N5355B	2	Диод Шоттки 1A 15B [SMB / DO-214AA]	017AA Vertical, 017AA Orizontal
VD4	MBR40H60PT-E3/45	1	Schottky Diodes & Rectifiers 60 Volt 40A Dual Common-Cathode	TO-247AD
VT1	BC848	1		SOT23-3N
VT2	N-Channel Mosfet	1		TO-247AC
XT2, XT?	DG301-5.0-2P1	2		DG301-5.0-2P12



76.20

120.65

